

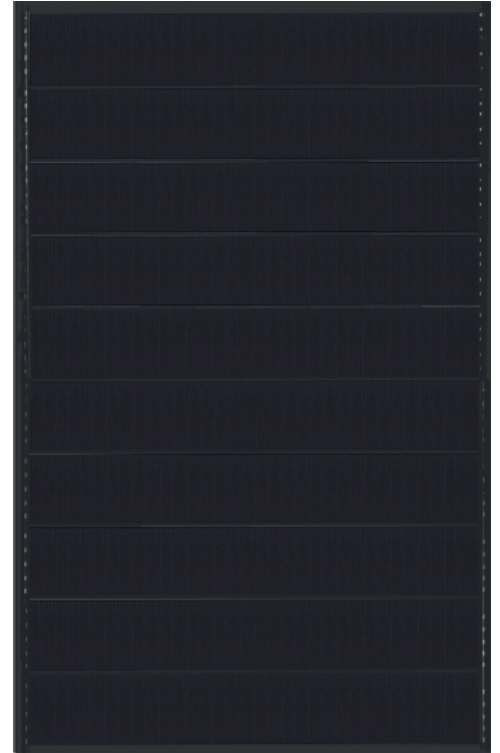


Shingled Module 325-340W(5BB)

0~+5W
Power Tolerance

19.6%
Maximum Efficiency

325-340W
Power Output Range



1622 x 1068 x 35 mm
Black Frame / Black Backsheet



High Quality and Reliable Modules

- ◆ Withstand up to 5400 Pa snow load and 2400 Pa wind load
- ◆ 2 EL inspections per cell/module for defect-free consistency
- ◆ 0-+5 W guaranteed positive tolerance
- ◆ Rugged design for long-term durability; passed extended reliability tests



Warranty

- ◆ 10-year product warranty
- ◆ 25-year linear power output warranty



Comprehensive Certificates for Products and Management

- ◆ IEC 61215, IEC 61730 and CE
- ◆ ISO 9001 for Quality Management Systems
- ◆ ISO 14001 for Environmental Management Systems
- ◆ OHSAS 18001 Occupational Health and Safety System



Electrical Characteristics STC

	BVM325M5-60S	BVM330M5-60S	BVM335M5-60S	BVM340M5-60S
Maximum Power (Pmax)	325W	330W	335W	340W
Maximum Power Current (Imp)	8.76A	8.87A	8.98A	9.09A
Maximum Power Voltage (Vmp)	37.1V	37.2V	37.3V	37.4V
Short Circuit Current (Isc)	9.42A	9.45A	9.49A	9.51A
Open Circuit Voltage (Voc)	45.1V	45.1V	45.2V	45.2V
Module Efficiency	18.8%	19.0%	19.3%	19.6%
Power Tolerance	0~+5W	0~+5W	0~+5W	0~+5W
STC: AM1.5, Irradiance 1000W/m ² , 25°C				

Electrical Characteristics NOCT

	BVM325M5-60S	BVM330M5-60S	BVM335M5-60S	BVM340M5-60S
Maximum Power (Pmax)	242W	246W	249W	253W
Maximum Power Current (Imp)	6.89A	6.98A	7.07A	7.15A
Maximum Power Voltage (Vmp)	35.1V	35.2V	35.3V	35.4V
Short Circuit Current (Isc)	7.6A	7.63A	7.66A	7.67A
Open Circuit Voltage (Voc)	42.7V	42.7V	42.8V	42.8V
NOCT: AM1.5, Irradiance 800W/m ² , 20°C, Wind speed 1m/s				

Mechanical Characteristics

Thermal Characteristics

Solar Cell	Mono crystalline	Pmax Temperature Coefficient	-0.40%/K
Glass	High transparency, low iron, tempered glass 3.2 mm	Voc Temperature Coefficient	-0.31%/K
Frame	Anodized aluminum alloy	Isc Temperature Coefficient	+0.05%/K
Junction Box	IP67 rated, with 3 bypass diode	NOCT	42.3±2°C
Output Cable	4 mm ² (EU)/1000 mm long		
Connector	MC4 Compatible		
Dimension	1622x1068x35 mm		
Weight	19.8 KG		

Maximum Ratings

Packing Information

Operating Temperature	-40~85°C	Pieces per pallet	30
Maximum Series Fuse Rating	20 A	Pallets per container (40HQ)	28
Maximum System Voltage	1000/1500V DC	Pieces per container (40HQ)	840

Specifications in this datasheet are subject to change without prior notice.

Pallet weight/size 643KG/1662*1122*1145mm

I-V Curves at Different Irradiances (330W)
Test Temperature: 25°C

